

## Calendar

**Jan 24** Home vs. New Hope @ 4:30pm  
**Jan 29** Home vs. Manawa @ 4:45pm  
**Feb 1** Gala Committee Meeting  
**Feb 5** Open House Event (Evening)  
**Feb 6** Open House Event (Morning)  
**Feb 12** HALF DAY OF SCHOOL  
 Parent/Teacher Conferences  
**Feb 13** LATE START  
**Feb 15** Babysitting Night



## What's For Lunch?

Tues	01/22	Meat Balls & Gravy, WG Noodles, Sliced Apples, Mixed Vegetables
Wed	01/23	Chicken Tacos, WG Tortilla, Corn, Banana
Thurs	01/24	Haddock, WG Brown Rice, Peas, Fruit Cocktail
Fri	01/25	Grilled Cheese on WG Bread, Tomato Soup, Green Beans, Mandarin Oranges
Mon	01/28	Baked Fish, WG Roll, Green Beans, Banana
Tues	01/29	Chicken Stir Fry, Stir Fry Veggie Mix, WG Brown Rice, Blueberries

## Babysitting Night

Sign up is on the board!

February 15th: 5:30—8:30pm

\$15/1 child \$25/2+ children



## Kids Heart Challenge

We are teaming up with the American Heart Association for the Kids Heart Challenge (fka, Jump Rope for Heart!)



Look for information to be sent home on February 12th and gear up for the event on February 26th!

## Parent/Teacher Conferences

Parent/Teacher Conferences will be held the afternoon of February 12th.

To allow for these discussions, school will be dismissed on the 12th at 11:30am.

Sign up sheets will be posted by classroom doors beginning February 1st for your convenience.

Please let your child's teacher know if you need to make alternate arrangements.



## THIS WEEK ONLY!

Early birds get the worm (well, if you REALLY want it)! Register online at [www.celebrationlutheran.net/celebrate-gala/](http://www.celebrationlutheran.net/celebrate-gala/) for the Gala.

If you register online by 9AM Friday, YOU will receive a FREE DRINK TICKET for every registered guest.



## CLS Family Prayers

Dear God,

As our family kneels to pray, we ask the Lord to help us throughout the coming day. Our family prays together for blessings great and small because our Savior listens when we call. Amen.

**Include in your prayers this week:**

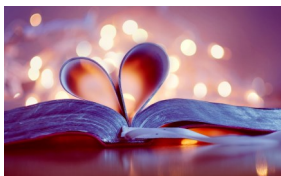
Kelly Family (Nolan, 3K) Mrs. George



## Show Your Love!

We all can agree Celebration Teachers are incredible!

If the mood strikes you, helpful hints on how to spoil our teachers are hanging on the Volunteer Board outside Mrs. Pickering's office.



## Scrip Sales

Hey CLS Family ~

We have a list of Scrip Cards (hanging on the office window next to the coffee machine) that are **BEGGING** to be spent and bring **JOY** to your friends, family or home!

Stop in, chat and check them out.

Fear not, we still have your favorite cards in stock as well!



## Snow Days are COMING!

Ready or not, **HERE COMES SNOW!**

CLS will close when severe weather strikes! In most cases, CLS will be closed if the Appleton Public Schools close for bad weather. However, we may be closed on days when the Appleton Public Schools chose to be open.



To stay informed, please check for a group email sent to families with school closing information. You also check on Facebook ([www.facebook.com/celebrationlutheralschool](http://www.facebook.com/celebrationlutheralschool)), or listen in to WEMI - 91.9 FM radio, or watch the news on Channel 2 (WBAY) TV, or Channel 11 (WLWK) TV for announcements. School closing announcements occur typically between 6:30 and 8:00am and throughout the day when worsening conditions are expected.

*Note: on days when school is closed due to weather, before and after school care is not available. If school is delayed due to bad weather, there is no before school care.*

## Open House Event

CELEBRATION LUTHERAN SCHOOL

3K - 8th Grade

# OPEN HOUSE

Academic Excellence in an Atmosphere of Christian Love

### WHEN

Tuesday February 5, 2019  
5:30-8:00 pm  
Wednesday February 6, 2019  
7:00-8:15 am

### WHERE

CELEBRATION LUTHERAN SCHOOL  
3100 E. Evergreen Dr. | Appleton  
(920) 734-8215  
Email: [school@celebrationlutheralschool.net](mailto:school@celebrationlutheralschool.net)

### WHAT

Presentations  
Tour  
Registration Information  
Childcare Provided

Participating in the Wisconsin Model School Evaluation System

Choose Your School

A family of 3 can make a difference in the quality of their school.

### Strong Academics

- Individualized Learning
- Small Class Sizes
- Music, Art, Play Ed
- Integrated Technology

### Christ-Centered Education

- Caring, Christian Teachers
- Daily religion classes
- Weekly Chapel
- Daily Devotions/prayer

### Family Focused

- Family Events
- Parent involvement encouraged
- Teachers and parents partner in education

CLS is having an Open House in February!

We've strategically scheduled this to not interfere with the school day.

Please keep the Open House in mind if you know of anyone interested in becoming a part of the CLS Family!